

Fishing Tackle

Reels

Rods

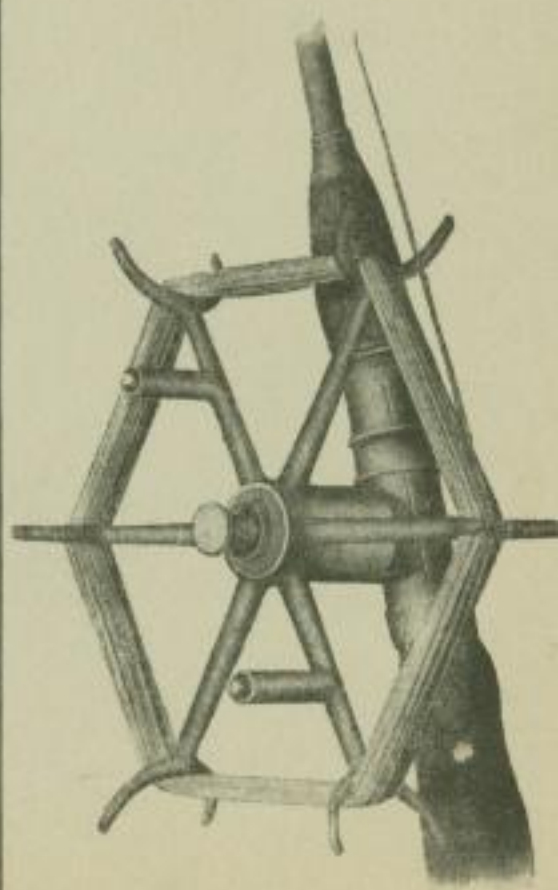
Lines

Baits

Guns

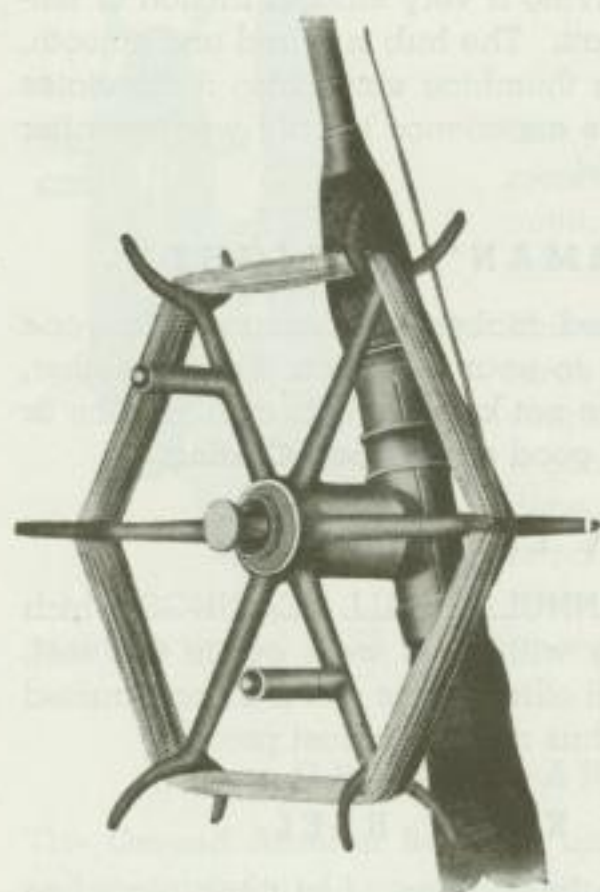
Boats

HENRY A. Kiest
KNOX, INDIANA



THE "REEL" PLEASURE OF CASTING WITH A Kiest REEL

WE say the "pleasure of casting" with a full appreciation of what the word implies. Being able to cast a bait either alive or artificial, either light or heavy, with the wind, against the wind or diagonally into the wind, and to cast from 25 to 150 feet, and to do this with a precision that verges nigh unto a Bulls-Eye accuracy, is a Real Pleasure.



It should be understood that the skill for ordinary casting with the small spool reel is absolutely unnecessary for the angler that uses the large type reel. The beginner who uses the Kiest ALUMINUM CASTING REEL soon becomes an expert without the great amount of Patience, Practice, Precision and Perseverance which is required of the beginner who uses the small spool reel. Therefore, the beginner who uses the Kiest REEL will have no trouble attaining the proficiency in casting which he thought he could never be able to attain by using the small spool reel. The Kiest REEL can be used in either the right or left hand.

The thumbing required when casting with a small spool reel to make proficient casts, takes many hours of patient practicing, but with the Kiest ALUMINUM CASTING REEL this careful thumbing is not necessary as the reel is fitted with a tension so as to eliminate this. That is why the beginner, with a Kiest REEL, can become an expert caster with only a few hours of practice.

ANYONE CAN CAST WITH THE Kiest REEL

This type reel is especially valuable to the amateur angler as it is level winding (that is you never have to thumb the line while winding it in) and this fea-

ture makes it Anti-Back-Lash, and as you do not have to thumb the line you never get your fingers wet, which is very disagreeable in cold weather.

This reel takes the beginner out of the "Dub Class" with every little practice and soon turns an amateur into an expert.

ABSOLUTELY FOOL PROOF

This reel is made of One Solid Casting of Aluminum which makes it very rigid and will stand the strain of fishing for a life-time. It is so light in weight, too, that one can cast all day long without that "Arm Ache" that usually accompanies a day's fishing with a multiplying reel. The Kiest Reel needs but very little attention with the exception of a little oiling now and then.

ANY WEIGHT BAIT CAN BE USED

This reel is fitted with a tension screw and lock-nut for adjusting the tension on the line according to the different weights of the different baits that the angler might use. This tension is composed of a coil spring pressing against two brass discs with a felt washer between, thereby giving a very smooth friction or tension which is essential for the light weight bait. The hub is round and smooth, being very highly polished, and this makes thumbing easy, also it alleviates the sore, split thumb which so many anglers experience in cold weather after a hard day's casting with the multiplying reel.

INEXPERIENCED FISHERMAN'S DELIGHT

The simplicity with which this reel can be used, makes it a pleasure for anyone who wishes to learn how to cast. Hand it to your wife, son, father, mother, sister, brother, daughter, or anyone who does not know how to cast, and he or she will be delighted with the pleasure of a good day's **Sport Casting**.

MADE TO LAST A LIFETIME

The Kiest Reel is fitted with GROUND ANNULAR BALL BEARINGS which makes it exceptionally easy running. They will never wear out in this reel, and the only attention they need is occasional oiling. This reel is so constructed that no dirt or dust can reach the bearings, thus making it dust proof.

ECONOMY WITH A Kiest REEL

You will save many times its cost in fishing lines alone. Just think, your line will dry on this reel (after being wet from fishing) without the necessity of taking the lines off the reel to dry, and you know that a silk line will rot very quickly if not allowed to dry properly.

UNUSUALLY SPEEDY IN RETRIEVING

This reel winds in eighteen inches of line at each revolution, and consequently this means a greater number of casts (than with the multiplying reel) in each

hour of fishing, and we all know that each hour of fishing is a very short time for the angler, so why not get a reel that will give you more fishing in less time.

SEVEN INCHES IN DIAMETER

From tip of fork to tip of fork, and will hold 200 yards of line very easily. The forks are one and one-quarter inches wide and are U shaped, and are very smooth, which makes this reel positively **Non-Line-Cutting**.

STRENGTH WHERE IT IS NEEDED

This reel is made of Aluminum and is die-cast which makes it exceptionally strong, as the outer surface of the casting is chilled during the process of making. It is **extra light in weight as it weighs only five and one-half ounces**.

BEAUTIFULLY POLISHED

This reel is highly polished and is really an ornament as well as a useful article in any angler's outfit. It not only looks beautiful but it casts magnificently as well.

This reel without a doubt is the **best reel** of the **large type** on the market, and it is simplicity in its simplest form, strength where it is needed, in fact, it cannot be broken while casting unless wilfully done, and when the reel is properly adjusted there is no end to the length of the casts that one can make. The distance is limited only to the caster's

ability to throw. A 25 yard line is not long enough even for the beginner.

GROUND ANNULAR BEARINGS

The **Ground Annular Bearings** used in the **Kiest Reel** are self-contained and non-adjustable, made especially for the **Kiest Reel**, they will last a life-time. Each reel contains **two** bearings.

Remember, there are **FIVE GREAT FEATURES** about the **KIEST ALUMINUM CASTING REEL**, which should be impressed upon your mind, and they are: **BALL BEARING**, **LINE DRYING**, **NON-LINE CUTTING**, **ANTI-BACK-LASH**, and **LEVEL WINDING**.





LANDS 40 POUND MUSKIE ON A Kiest REEL

This is a picture of Dr. S. H. Baehr of Erie, Pa., and his 40 lb. muskie which the doctor landed on a **Kiest Reel** in the Kawatha Lake region of Ontario, Canada, last summer. The doctor, writing Mr. Kiest of his experience, has this to say, "This fish weighed forty pounds and gave me a lively fight. Your reel worked perfectly with this big fish. Also, I find I can cast with more ease and less back-lash with your reel than with any other I have tried." **Kiest Reels** are attaining an enviable reputation over the country.



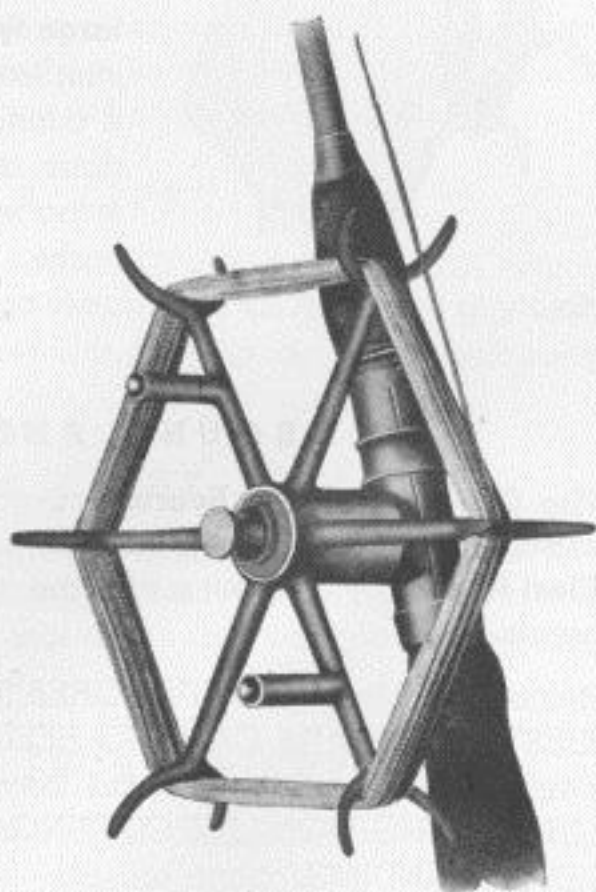
The Kiest Reel is supplied with two reel seats so that it can be used either on straight handled or off-set handled rods.

THE Kiest REEL

Postpaid \$6.00

Ball Bearing
Level Winding
Line Drying
7 Inches in Diameter

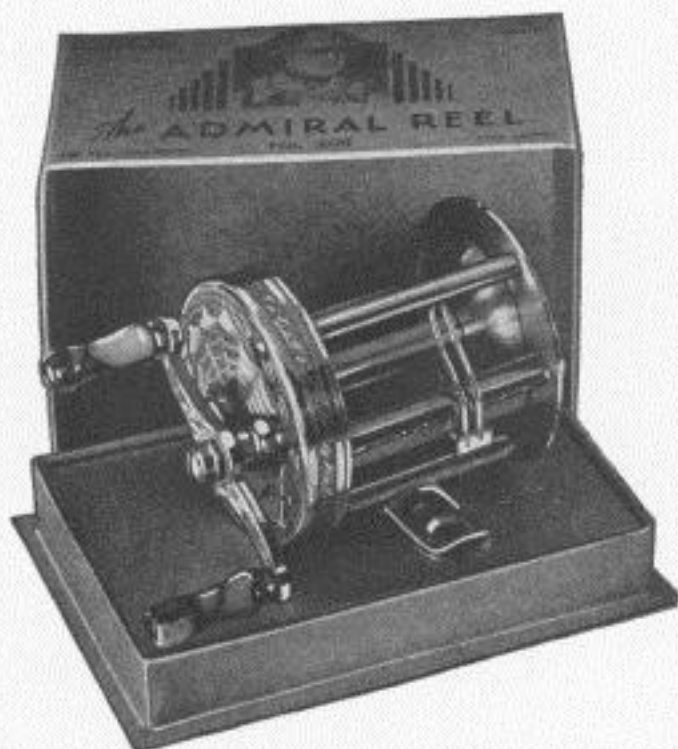
Manufactured by
HENRY A. Kiest
Knox, Indiana



THE ADMIRAL REEL

A beautiful reel. It was so popular in 1937. 100 yards.

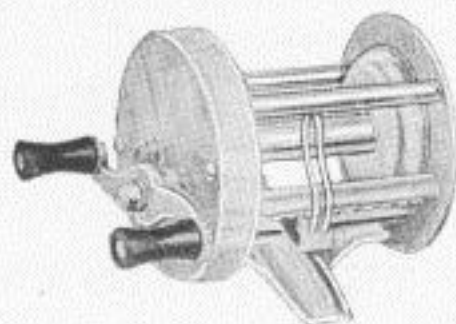
No. BH600.....Each \$5.00



THE SEVEN HUNDRED

Bridge construction, silent gears. Patent level wind. Stainless steel bearings. Head ring of Burlite. Beautiful and durable reel. 100 yards.

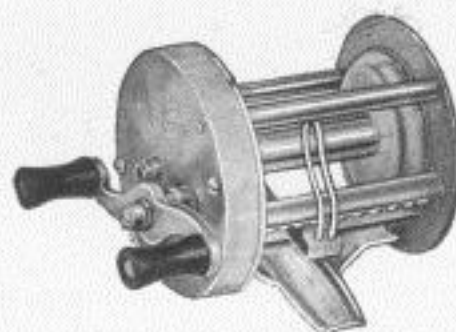
No. BH700.....Each \$7.00



THE MOHAWK

Popular level winding reel, with steel bearings and spiral gears. A very substantial reel.

No. BH1645 80 to 100 yds.....Each \$1.25



THE NEW UTICA REEL

Automatic, with Chromium Plated Line Guard, Black Electroplated Finish.

No. BH6B.....Each \$6.00



THE UTICA AUTOMATIC REEL



Capacity 50 yards of size F enamel line, or 30 yards size C-D-G double tapered enamel line. Winding capacity is 25 yards. Lightest weight with Greatest capacity of any automatic reel made. Aluminum brush finish. Weight $6\frac{1}{4}$ ozs. Diameter $3\frac{1}{8}$ in. Thickness $1\frac{3}{4}$ inches.

No. BH2A Each \$3.50

THE FAMOUS SPORTCRAFT REEL

Made of Aluminum, light, strong, and perfect with line guard. Weight 4 oz.

No. BH60E Trout Size

Each \$3.25

No. BH100E Salmon Size

Each \$4.00



THE NATIONAL SPORTSMAN FLY REEL



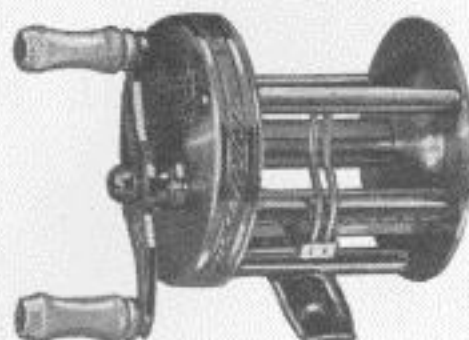
Trout Reel, very light and strong. Made from Bakelite. Each reel guaranteed. Single action. $3\frac{3}{8}$ inches high. $1\frac{1}{4}$ inch wide. Weight 4 ozs. No sharp edges to wear and tear line.

No. BH1104 Each \$2.75

THE MAYFLOWER

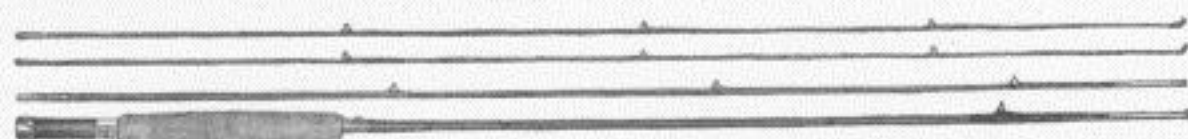
Beautiful White Chrome Finish. Spiral Gears, 80 to 100 yards.

No. BH110 Each \$3.50



FLY RODS

THE NEW SARANAC FLY ROD



Tempered bamboo, three-piece, split bamboo rod, with extra tip, swelled butt, beautifully wound red and black silk. Solid cork grip, new Bakelite Reel Seat, Agatine guide and tip. Put up in canvas bag and aluminum rod case.

No. BH2348 Weight 5¼ ozs. Length 9 ft.
Each **\$12.00**

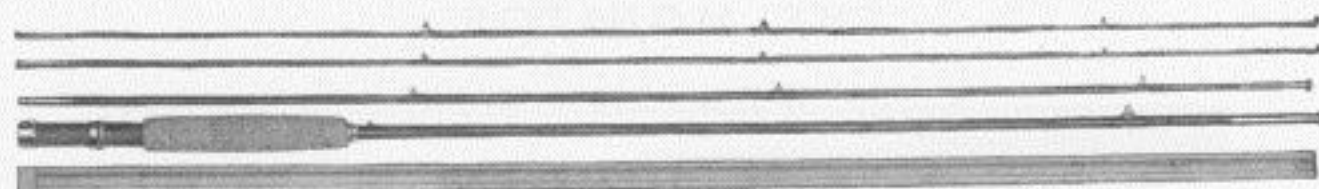
THE NATIONAL SPORTSMAN



Split Bamboo Fly Rod, three-piece with extra tip joint made from selected stock, swelled butt, reel seat below hand. Chrome mountings, rolled welled ferrules, Carbon Steel snake guides, close winds of red and green silk, shaped sectional cork grasp. Put up in wood tip protector.

No. BH2317 Weight 7 ozs. Length 9 ft.
Each **\$8.00**

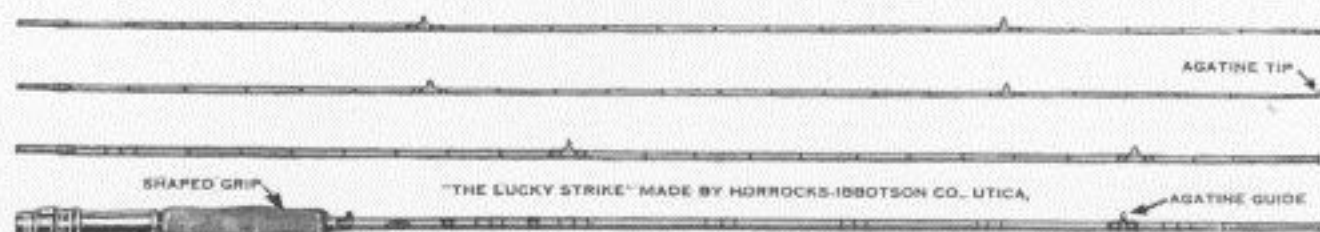
THE ORISKANY



A light weight, all purpose fly rod, cork grip. Wood reel seat, Chromium plated ferrules, Agatine butt guide. Tips in wood tip protector.

No. BH2316 Weight 5¾ ozs. Length 9 ft.
Each **\$7.50**

THE LUCKY STRIKE

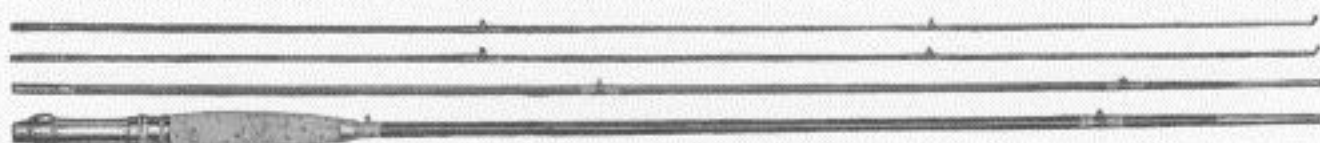


Reel-tite Locking Seat, split bamboo fly rod, made of good grade stock with fancy shaped solid cork grasp. Extra quality chromium plated mountings, and with Agatine butt guide, and one Agatine tip. Very beautifully wound with high colors silk.

No. BH2314 Length 9 ft.

Each \$5.50

THE COLUMBIA



Split Bamboo Fly Rod, silk winds, three-piece with extra tip joint, reel seat below hand. Chromium plated nicked mountings, rolled welled ferrules, steel snake guides, solid cork grasp, beautiful light brown stain. In cloth partitioned bag. Tempered Bamboo.

No. BH2310 Weight 7 ozs. Length 9 ft.

Each \$3.75

BAIT CASTING RODS THE MONITOR



Tempered bamboo, two-piece, swelled butt, double solid sectional cork grip, extra fancy whipped. Fitted with all Agatine Guides and tip. Detachable finger hook. In Khaki bag. One tip only.

No. BH297 Weight 5 to 5¼ ozs. Lengths 4½ and 5 ft.

Each \$5.00

THE LANGLEY

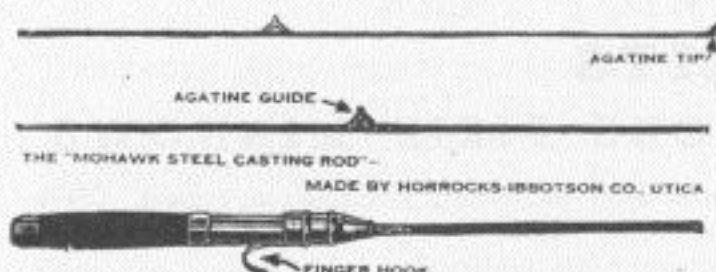


Two-piece, nickel mountings, double solid sectional cork grip, all Agatine Guides and tip. Beautifully whipped in red, black and white silk. Finger hook on reel band, welted ferrule, one tip only. In cloth bag.

No. BH197 Weight 5 to 5¼ ozs. Lengths 4½ and 5 feet.

Each \$3.50

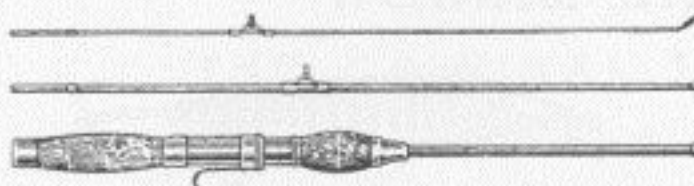
THE OTSEGO



Bait Casting Rod. Solid cork handle. Finger hook. All Agatine Guides and Agatine Tip.

No. BH1587 Lengths 4½ and 5 ft.
Each \$1.50

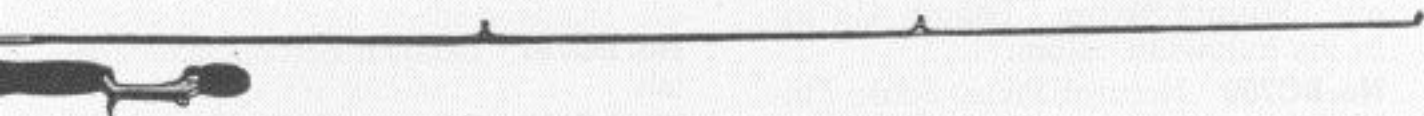
THE ONEIDA



Bait Casting Rod. Double cork handle. Finger hook. Guides, rings, and reinforcements enameled black. Reel seat nickel-plated.

No. BH1499 Lengths 4½ and 5 ft.
Each \$1.75

THE PIRATE



Double cast aluminum off-set grip, round tapered solid steel tip, cadmium plated. Put up in cambric bag.

No. BH2AADG Lengths 4½ and 5 ft.

Each \$5.00

THE CHIEFTAIN

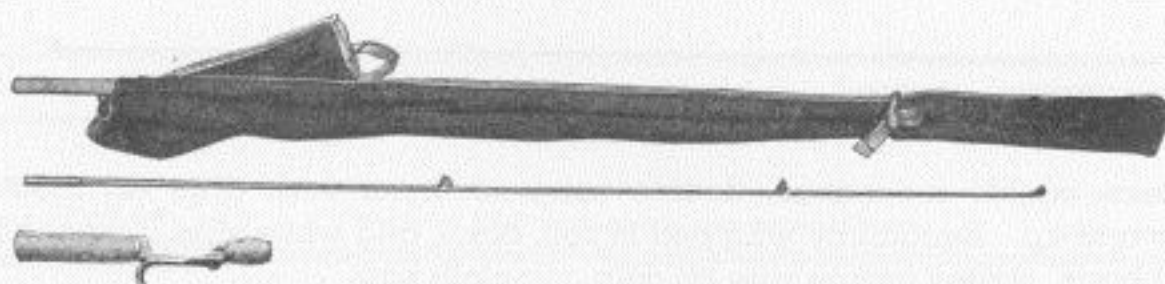


A low priced solid steel casting rod, with single grip. One Agatine Guide on tip, Agatine top, round steel.

No. BH1SG Length 4 ft.

Each \$3.00

THE RAINBOW



Cast aluminum offset grip, hexagonal ground tip, cadmium plated. Put up in a canvas red bordered bag with dowel to protect the Agatine Guides and tip top.
No. BH6AADG Lengths 4½ and 5 ft.

Each \$6.00

BAITS

CREEK CHUB'S FAMOUS PIKIE MINNOWS

Made to accurately represent a live Pike Minnow in looks and natural swimming movement. Creek Chub's Famous Pike Minnows continue their unbroken record of achievement, year after year. Equally good for Bass, Pike, Pickerel and Muskellunge; also favorites for many kinds of salt water fish. Made in both solid and jointed styles. Every Genuine Famous Pike is branded on the mouth-piece—C. C. B. Co., Garret, Indiana. Look for this mark.

FAMOUS PIKIE MINNOW

There's nothing to compare with this greatest of all lures. Its natural, life-like swimming movement and looks make all game fish mad, and they strike it hard to kill it. Runs about 2 to 3 feet deep. It gets and holds the big Bass, Pike, Muskie, Lake Trout, etc. Weight ¾ ozs. Length 4½ in. In the following colors:

No. BC700 Natural Pike, Scale Finish.



No. BC701 Natural Perch, Scale Finish.

No. BC702 White with Red Head.

Each \$1.00

BABY PIKIE

Made exactly like the Famous Pike Minnow, except smaller in size. It has a wicked wiggle and catches record game fish, everywhere. A light, strong killer. Weight ½ ounce. Length 3¼ inches. Made in following finishes:

No. BC900 Pike, Scale Finish.

No. BC902 White and Red.



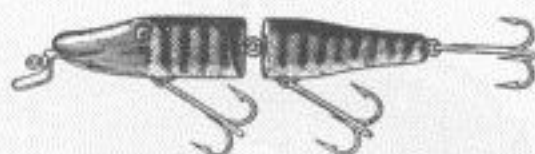
No. BC904 Golden Shiner, Scale Finish.

Each 95c

JOINTED PIKIE MINNOW

With a beautifully wiggling movement, flexible and sinuous. The Jointed Pike creates in the fish an irresistible impulse to strike. Casts very easily and does not run quite so deep as the BC700. Guaranteed to be a killer. Weight $\frac{3}{4}$ oz. Length $4\frac{1}{2}$ inches.

No. BC2600 Natural Pike, Scale Finish.



No. BC2602 White with Red Head.

No. BC2618 Silver Flash.

Each \$1.25

BABY JOINTED PIKIE

This peppy little wiggler represents a live minnow in a hurry to get away. A deadly killer in rivers and lakes, especially Natural Pike finish. Starting, stopping it, and changing speed reeling, gets many strikes. Weight $\frac{1}{2}$ ounce. Length $3\frac{1}{2}$ inches.

No. BC2700 Natural Pike, Scale Finish.



No. BC2702 White with Red Head.

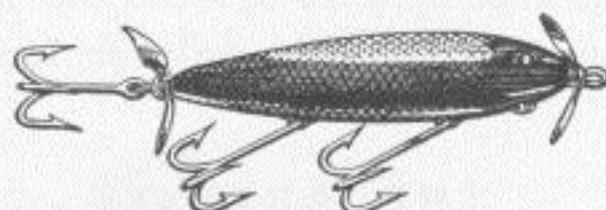
Each \$1.15

THE ORIGINAL INJURED MINNOW

The original and only genuine wounded minnow, or "The Crip," widely imitated but never equaled as a bass taker. Represents a crippled minnow lying on its side, but able to make a little fuss on the surface. Retrieve in slow short jerks. Weight $\frac{1}{2}$ oz. Length $3\frac{3}{4}$ inches.

No. BC1501 Natural Perch, Scale Finish.

No. BC1502 White and Red.



No. BC1504 Golden Shiner, Scale Finish.

Each \$1.00

THE PLUNKER

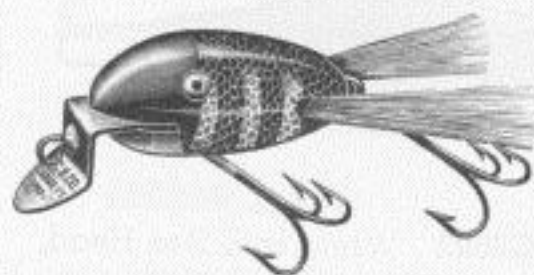


The favorite lure of many bait casters. Toss it into a likely looking pocket in the reeds or pads and give a series of very short jerks with rod. The bobbing, dancing, fussing and ker-plunking sound, all on the surface, makes the lazy and logy Bass, and Pike too, spring into action, and strike hard. Weight $\frac{5}{8}$ oz. Length 3 in.

No. BC3200 Natural Pike, Scale Finish

Each 75c

NEW CREEK CHUB "DINGBAT"



Outstanding lure of 1937. Developed in response to a demand for a moderately small sized, medium weight lure that would cast easily and travel deeper than the average semi-surface plug. These fluttering hair legs are an entirely new idea in plug lures. They produce an erratic motion entirely different from a lure not equipped with them. This lure makes an especially fine and attractive

bait for all game fish, especially during warm weather when fish are lying in deeper water. It is a deep running, fast wiggling, fish foolin' masterpiece. Length 2 inches. Weight $\frac{5}{8}$ ozs.

No. BC5100 Natural Pike Scale, Brown Legs

No. BC5102 White Body, Red Head, Red Legs

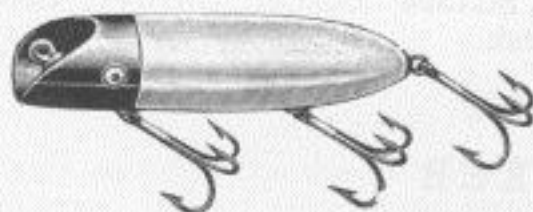
No. BC5119 Frog Finish, Green Legs

Each \$1.00

SHUR-STRIKE LURES

All these lures are equipped with the best quality hardware, Mustad extra-strength hooks, and have a very high grade finish.

THE ARENO

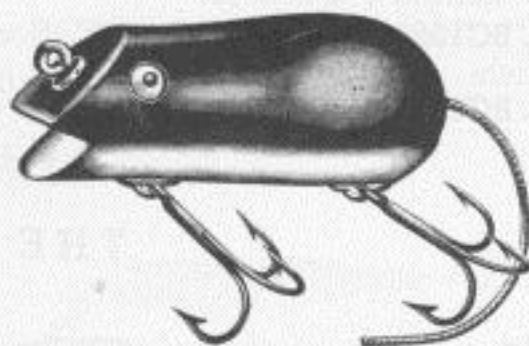


White, Red Head

A darting, wobbling lure. Floats when at rest. Travels under water. Length $3\frac{3}{4}$ in. Weight $\frac{3}{4}$ oz.

No. BO2 Each 27c

THE MOUSE



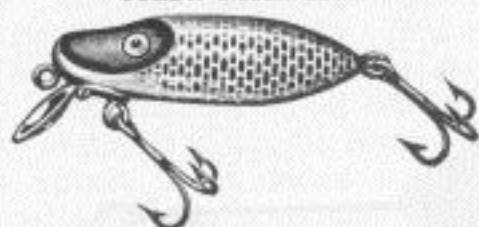
White, Red Head

A close imitation of the popular mouse type lures now on the market. Length $2\frac{1}{2}$ inches. Weight $\frac{5}{8}$ oz.

No. MO-2 Each 29c

RIVER RUNT

Yellow Perch Scale



A small sinking bait especially suited for lake and stream fishing. Travels rather deep. Length 2½ in. Weight ⅝ oz.

No. HR1 Each 29c

INJURED MINNOW

White, Red Head

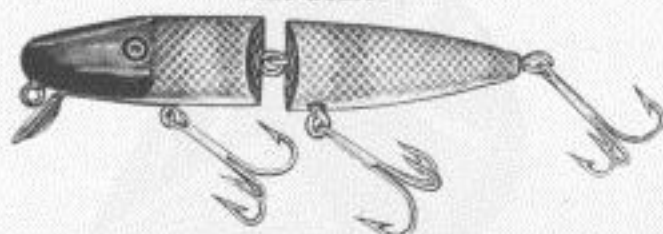


A double spinner, floating surface lure for bass. Length 3¾ in. Weight ¾ oz.

No. IM2 Each 32c

JOINTED PIKIE

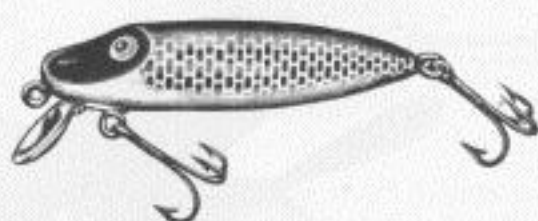
Pike Scale



A close imitation of the popular mouth-piece lures now on the market. Floats when at rest, dives and wiggles when retrieved. Length 4¼ in. Weight ¾ oz.

No. PJ0 Each 45c

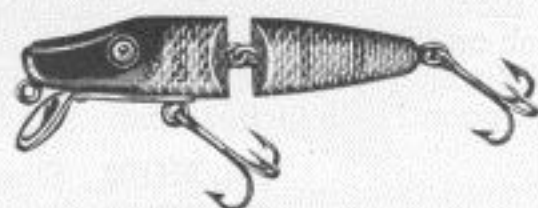
FLOATING RIVER RUNT



A floating lure similar to the HR1. Length 3¼ in. Weight ½ oz.

No. FHR Yellow Perch Scale
Each 29c

BABY JOINTED PIKIE



Same as No. PJ0 except smaller. Length 3¼ in. Weight ⅝ oz.

No. BPJ6 Shiner Scale
Each 45c

BABY ARENO

White, Red Head



Same as No. BO2 except smaller. Length 2¾ in. Weight ⅝ oz.

No. BBO2 Each 25c

PORK RIND

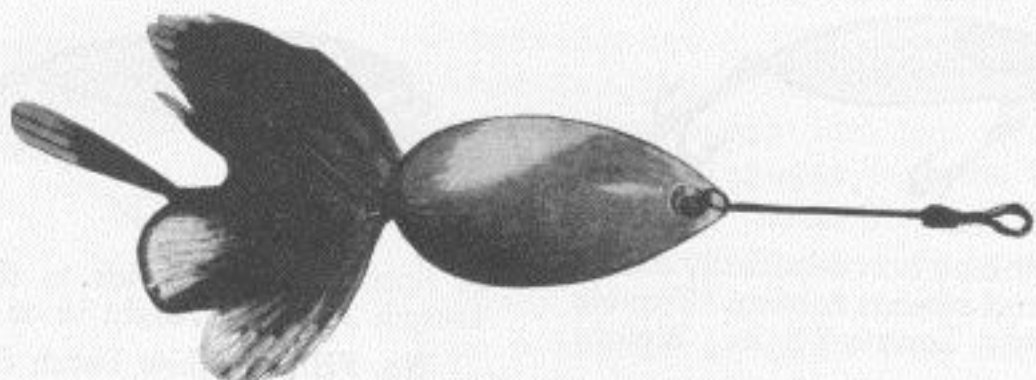


For many years Pork Rind has been a most effective bait for trout, bass, pike and pickerel as well as the other game fish. It has a distinctive motion in the water which is different from any other bait. Our pork rind strips are cut in the proper shape.

No. BH524 The highest quality rind, put up 11 strips in a large bottle.

Each 35c

WINNER SPINNERS



This spinner is made with very light blades which turn very easily. There are anti-friction balls on the shaft which also makes it easy for the blade to turn. The hooks or feathered lures are easily changed, made by a sliding coil fastener made of spring wire. Supplied with single blades, nickel finish, with flies. Flies are most popular patterns. The flies on the smaller spinners are selected for Brook and Rainbow Trout. The flies on the larger spinners are for Brown Trout and Bass. Try one of these spinners with a bucktail fly for early spring fishing. #2 Spoon 1 1/16 inches long. #3 Spoon 7/8 inches long.

No. BH102 Single Spinner with Fly #2

No. BH103 Single Spinner with Fly #3

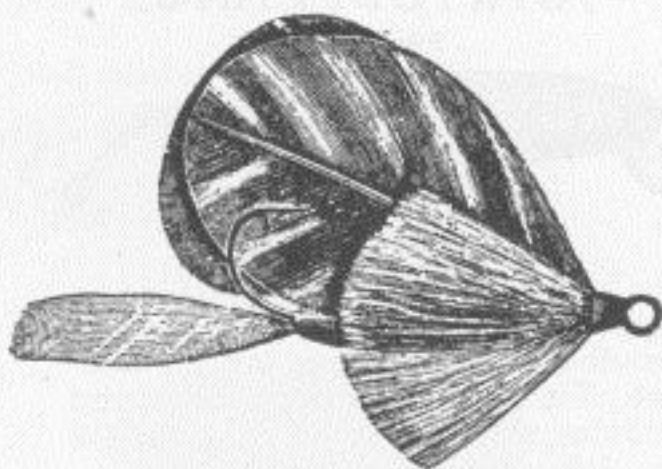
Each 25c

WEEDLES FLY

Tied on Sproat ringed hook. Extra thick body. Heavy stiff wings. A good killer. Made in best patterns and also in assortment.

No. BH3006 Size 6, 8 or 10 hook

Doz. \$1.40

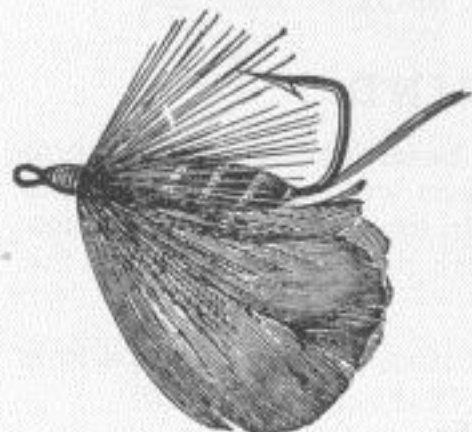


BASS FLIES

We carry in stock the most popular patterns. On ringed hooks for casting and for Spinner fishing. Silk body flies.

No. BH2720 Size 2/0 Hook

Doz. \$2.60



BASPOON BAIT

The "Baspoon" is a comparatively new bait which has made good. This is now found in the tackle boxes of most successful pike and bass fishermen. It has a wiggling motion which is different from any other bait. The spoon is made of solid metal in the proper weights for casting. Because it has less air resistance than plugs, it is much easier to cast into the wind. Many fishermen like to use these baits because they will cast so far. Red with White Stripe.

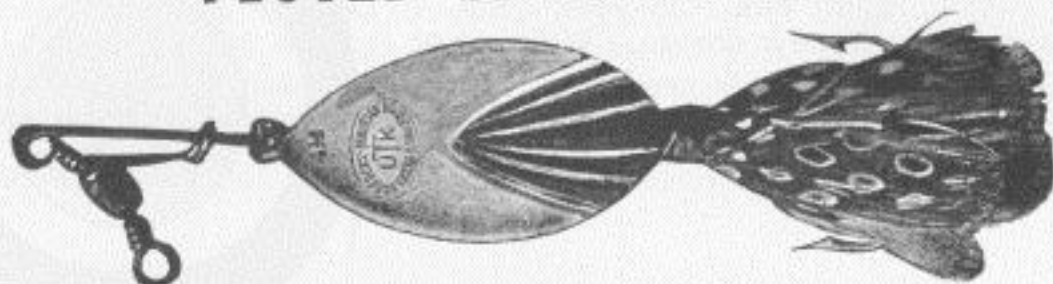


No. BH1230 Spoon 2¼ inch

No. BH1330 Spoon 3¼ inch

Each 20c

FLUTED SPOON BAITS



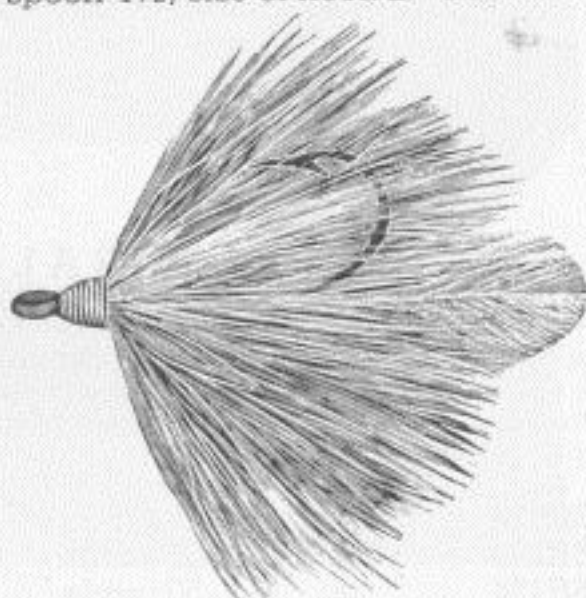
Superior quality nickel fluted spoons have for many years been one of our best selling baits. These are strongly constructed throughout, and supplied with a swivel and feathered hook. Inside of spoon is red enamel. No. BH124 Size of spoon 4, size of hook 3. No. BH124½ Size of spoon 4½, size of hook 2. Each 20c

BUCKTAIL CASTING FLY

Extra thick genuine bucktail with red feather center tail. Made in the following patterns, each on a card: Natural Buck, White Buck, Red Buck, Red and White Mixed.

No. BH3300 Sproat ringed hook. Nos. 4/0, 2/0, 1/0.

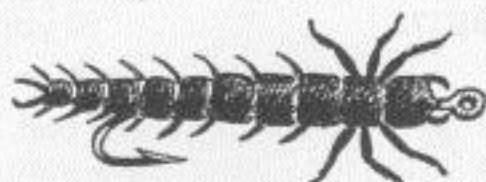
Each 40c



HELGRAMITES

No. BH410 Soft Rubber, 1¾ inches long.

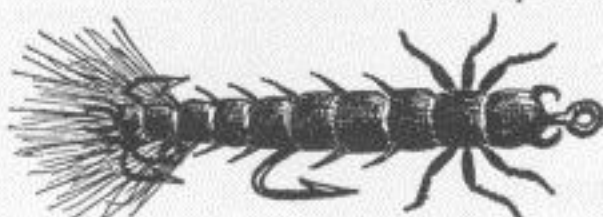
Each 35c



HELGRAMITES

No. BH417 Soft Rubber, 2 inches long.

Each 45c



LINES

HORROCKS LEVEL FLY LINE



The finest level line made. Best grade Japan floss silk braided on the best modern machinery. OIL FINISHED. The silk is thoroughly impregnated with oil and there is no surface finish to crack or peel. 25 yard coils. Brown.

No.	Size	Test	Price
BH743	E	28	\$2.00
BH742	D	33	2.25
BH741	C	38	2.65

THE OLD GOLD

OIL FINISHED, cannot crack or peel. Made of superior quality Japan silk. 25 yard coils, 4 conn. in fancy box of new design. Weight per box 1/4 lbs. Brown.

No.
BH26E
BH30D

Size
E
D

Price
25 yds.
\$1.50
1.75



GOLD SEAL

A very high grade line. Hard braided from a very superior grade of silk. Waterproofed with a special dressing that prevents the water from getting into line. Laboratory tests have shown that our waterproofing is the best on the market. 50 yard spools.



No.	Test	Price
BH312	17	\$1.35
BH317	23	1.60

THE ADMIRAL

Was introduced very recently but is already selling in large volume. This proves that it is a good line for the money and is a good seller. Made of best silk and thoroughly waterproofed. Guaranteed to give complete satisfaction.

No.	Test		Price
BH274	18	25 yards	\$0.65
BH273	22	25 yards	.75
BH174	18	50 yards	1.15
BH173	22	50 yards	1.35

HITEST

This is the best line that can be made. The silk is the finest that can be procured. Braided with great care on the most modern machinery and completely waterproofed. Each line is tested, inspected and guaranteed. No finer line can be built than Hitest.

No.	Test	Price
BH518	18	50 yds. \$2.10



LEAPING BASS

An assortment of patterns and colors of soft-braided lines, made of pure silk. This is a moneymaker in any store. Put up on a large enameled spool with fancy label it makes a very flashy item. 25 yard spools, 4 connected, 18 lb. test.

No.
BH18D

Color
Dark Colors

Price 25 yds.
40c



LILY BLACK CORD

The trend in fishing lines is toward black lines. We have brought out this new line to meet a large demand. This line is very hard twisted and strong for its size. Each line guaranteed test. This line can also be sold for an extra strong fine thread for sewing.

No. BH1057 12 lb. test, 150 ft. in spool. Each 20c



MOHICAN ASSORTMENT

Strong Braid—Smooth Finish—Assorted Colors—50 Feet on Card—Four Lines Connected.

No. BH546 Trout size, 18 lb. test. Each 15c



KING ASSORTMENT

Hard Braided Special Finish Lines—Assorted Colors—75 Feet on Card—Four Lines Connected.

No. BH846 Trout size, 18 lb. test. Each 20c



REGNEW LINE DRESSING

Regular use of a good line dressing is necessary to preserve the finish of any fly line. It keeps the line soft and pliable and greatly prolongs its life. Regnew line dressing is made without any animal fats so that it cannot injure any finish. Necessary to dry fly fishing as it floats the line and makes it shoot through the guides. No. BH50 Each 25c



TWISTED PHOSPHOR BRONZE LINE



In demand from Maine to Vancouver. First quality flexible, strong trolling line. Made from non-corrosive bronze wire, cable-twisted. A little larger than the lead in your pencil, but tests 75 pounds. 50 feet in coil, 6 coils connected.

No. BH7T 50 foot coil.

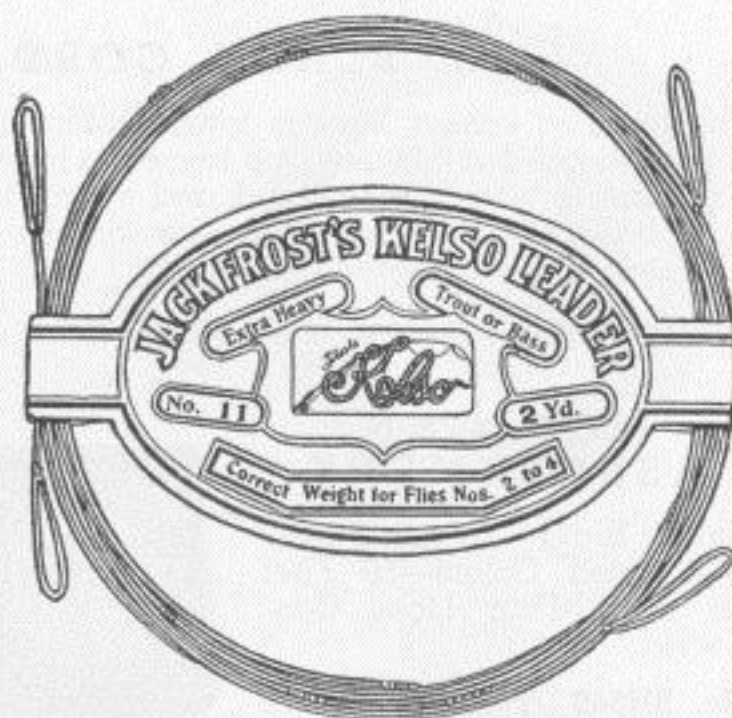
Each 75c

KELSO LEADERS

Our "Kelso" Leaders are made of the choicest selection of round perfect gut and are the best leaders it is possible to make. The "Kelso Knot" found only in Kelso leaders, is so tied as to bury the ends of the gut in the middle of the knot, thus making a smooth tapered knot which causes very little ripple. Better leaders than Kelso cannot be made at any price. Single gut leaders, with dropper loops.

No. BH11 For flies Nos. 2 to 4. 2 yards.

Each 80c

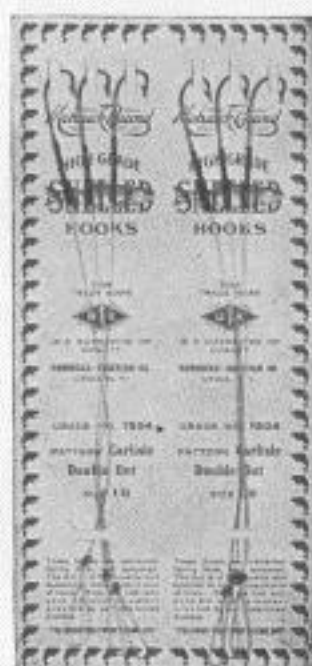


SPANISH SILK WORM GUT LEADERS

The quality of our leaders is unsurpassed. Our medium grade leader is better than many that sell for extra fine grade. Mist color.

No. BH250S Trout size. Single, 2 yards.

Each 20c



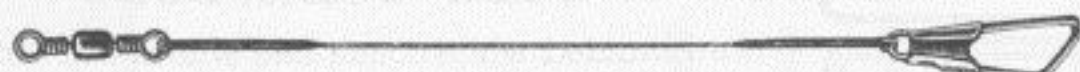
SNELLED HOOKS, MOHAWK BRAND

Keen Point Rust-Proof Hooks. Mohawkska mist colored, polished gut snells. Red silk windings with our special method of waterproofing. Folder pack put-up. The Mohawk Hook is probably the best known and most widely used of any single brand in America.

No. BH1504 Double Gut, Nos. 2, 4 and 6.

Doz. 50c

TWISTED STEEL LEADER



These should not be confused with cheap twisted wire leaders. Made of fine quality twisted wire. Very strong and pliable. 6 inches long, barrel swivel one end, and copper snap one end.

No. BHS106 Each 10c



NEW FLOATING MINNOW BUCKET

Full 10 quart, galvanized round Floating Bucket. A winner at the price.

No. BHN10
Each \$2.00

LEAD SWIVEL BASS-CASTING SINKERS

Clean and smooth casting. A perfect swivel working on a brass washer; will not stick or choke.

No. BH6 1/2 oz. Each 8c
No. BH8 1/4 oz. Each 7c
No. BH10 1/8 oz. Each 5c



ADJUSTABLE LEAD SINKERS

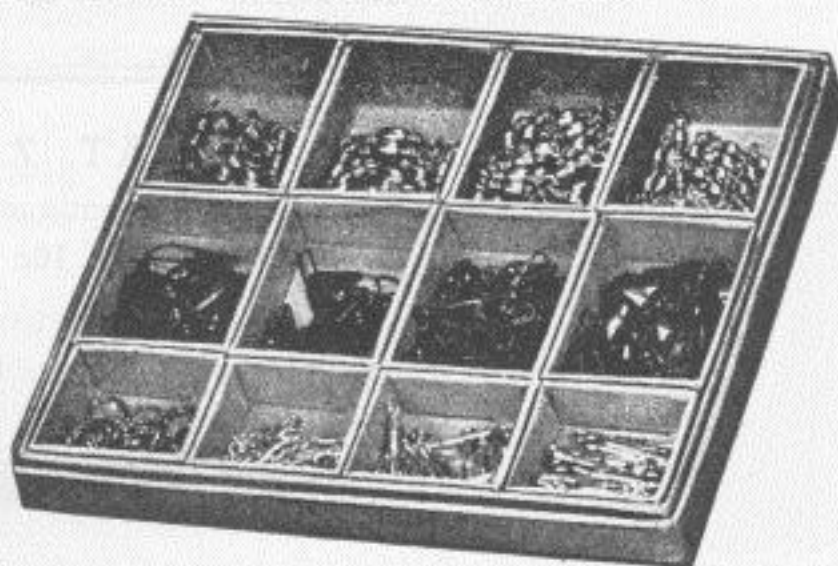


Instantly Adjustable to Line Without Disturbing Hook.

No. BH2 Doz. 18c
No. BH4 Doz. 23c
No. BH6 Doz. 38c

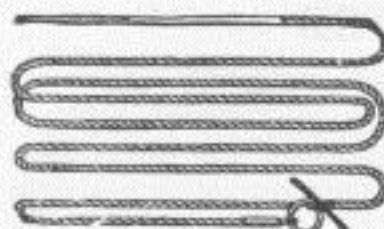
SNAP AND SWIVEL ASSORTMENT

In Attractive Red and Blue Box. Contains the following assortment:



	Doz.		Doz.
12—#1/0 Copper Snap Swivels	60c	36—#4 Barrel Swivels	25c
12—#2 Copper Snap Swivels	60c	36—#8 Barrel Swivels	25c
12—#4 Copper Snap Swivels	60c	72—#2-6 Assorted Split Rings	8c
12—#6 Copper Snap Swivels	60c	24—#1 Connecting Links	15c
12—#1/0 Barrel Swivels	40c	24—#2 Connecting Links	20c
12—#2 Barrel Swivels	25c	24—#3 Connecting Links	25c

Price of separate items as listed above. Price of Full Assortment in Box. \$4.80



FISH STRINGERS

Hard braided white cotton line with a five inch baiting needle at one end and closed ring at the other. Length 6 feet.

No. BH350 Each 15c



CELLULOID DRY FLY BOX

Celluloid dry fly box. Hinged top, size 6 inches long, 3½ inches wide by 7⁄8 inches deep. 8 compartments, transparent. Weight per dozen, 1 pound.

No. BH208 Each \$1.00



LEADER AND FLY BOXES

Leader Box of Aluminum. Pad, flanged bottom 3¾x¾ inches.

No. BH204 Each 30c

BLUEGILL FLOAT

An extra light float. 6½ inch light stick, ¾ inch painted cork.

No. BH680 Each 8c



BLUEGILL FLOAT 7 INCH

Fancy painted stick, 1 inch painted cork ball, adjustable.

No. BH681 Each 10c

UTICA CELLULOID FLOAT



The big selling float for Twilight Fishing. 7 inch. Finished in brilliant colors.

No. BH707 Each 20c

GENUINE CORK BALLS



UNPAINTED, with removable peg, adjustable to any part of line.

No. BH82 1¼ inch Each 7c

No. BH85 1½ inch Each 8c

No. BH87 1¾ inch Each 10c

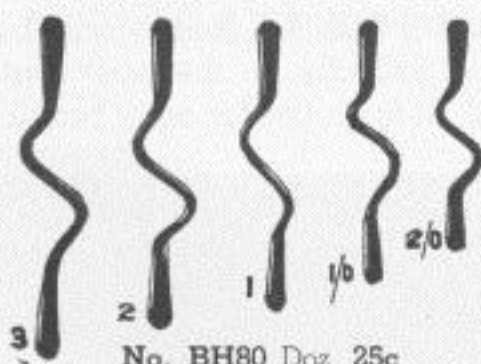


HOOKS

A splendid assortment of 100 of the best selling sizes of Ringed Razor steel fish hooks, sizes 2/0 to 10 assorted.

Per Box 20c

SNAKE GUIDES



LANDING NETS HANDLES

All Landing Net handles, both one-piece and two-piece, are fitted with our extra strong shoulder screw and shoulder bushing. They therefore screw together to a perfect fit and will not work loose or bend at the joint. Handles are finished in a durable dark brown enamel and have a heavy rubber grip.



No. 10 Trout Net

FRAMES

All Landing Net frames are made from high carbon tempered spring steel and are cadmium plated all over. They are built with the top connecting stud both riveted and electrically welded in place—there is no screw and nut to come out and get lost. Furnished with waterproof brown cotton net, three-quarter inch mesh.

DIMENSIONS

No. BW10 11"x11" 6" Handle one-piece 20" Deep.

85c

No. BW20 12½"x13½" 19" Handle one-piece 20" Deep.

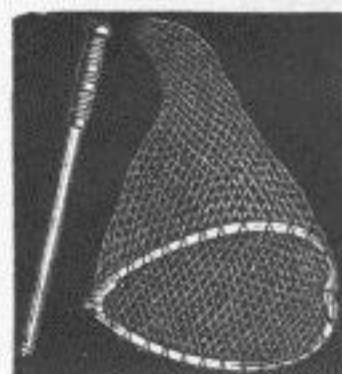
\$1.05

No. BW30 12½"x13½" 38" Handle two-piece 24" Deep.

\$1.40

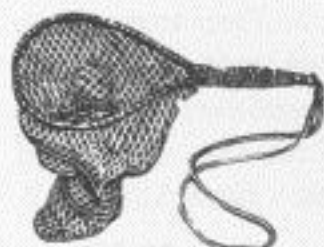


No. 30 Landing Net



No. 20 Landing Net

THE RAINBOW NET



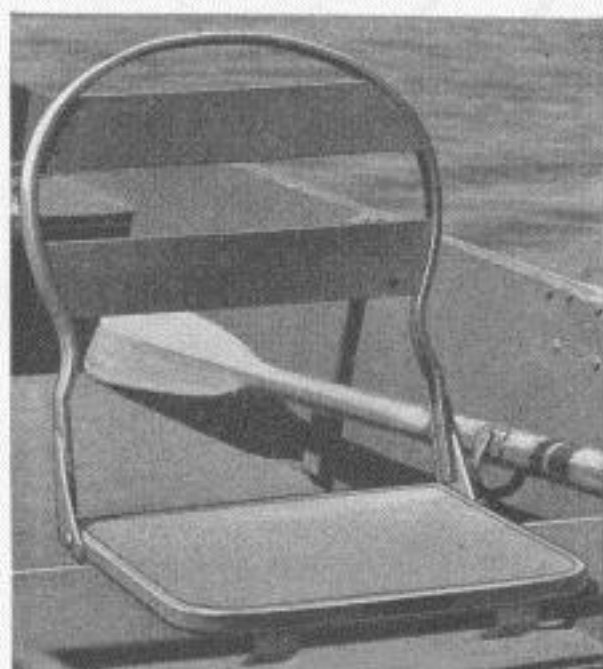
No. BH3016

Complete Bow made of spring steel. Coppered so that it will not rust; with corrugated black ebonized handle, screw eye in end, with rubber attached for wading. Size of bow 9x12 inches in diameter. Handle 8 inches long.

No. BH3016 Each 75c

BOAT SEAT

The best made for fishing and boating, with flexible steel back. It hooks or clamps instantly on the boat seat. Gives complete back support without leg strain. It folds flat for easy handling. Finished in durable green enamel. **No.**

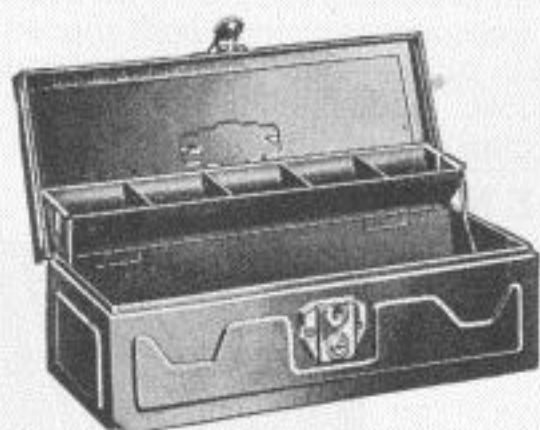


BW102—Channelbar back with flexible cross pieces. Cork covered steel seat with channel bar edge. Seat braces hook on boat seat. Weight 8½ lbs.

Each \$2.50

No. BW103 Same back as No. BW102, but has ball bearing swivel base which clamps to boat seat. This permits seat to turn completely around. You can straddle the seat of a boat while fishing, sit at any angle, swing around to raise the anchor or bait the hook, and have perfect comfort all the while. Weight 13 lbs.

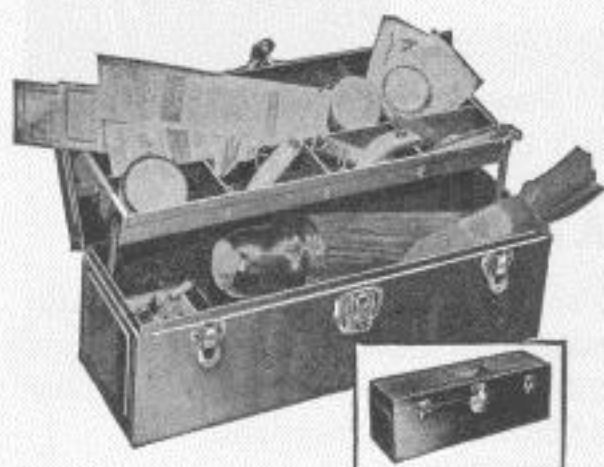
Each \$4.00



CANTILEVER BAIT BOXES

No. BHU14 A strong steel constructed box. Will hold Thermos bottle. Matched fittings. Embossed rule on top. Comes with lock and key. Size 14x6½x6. Weight 3¾ lbs.

No. BHU14 Each \$1.50



CANTILEVER DOUBLE TRAY

19 inches long by 6¼ inches wide and 7 inches deep. Two trays, one with 9 compartments, and one with 6 compartments. Improved full grip handle, with rule on top, lock and key. Weight 7 lbs. Size 19x6¼x7.

No. BHU192 Each \$3.50

ITHACA REPEATERS

ITHACA STANDARD GRADE REPEATER— MODEL 37



ITHACA MODEL 37 STANDARD REPEATING GUN

12 and 16 gauge only. 12 gauge 26, 28, 30, and 32". 16 gauge 26, 28, and 30". These are featherlight guns and may be had as light as 6½ lbs. in the 12 gauge and 6 lbs. in the 16 gauge and every gun is thoroughly proof-tested with loads far more powerful than any available on the market. The light weight of this model as compared with other repeaters of the same and even smaller gauges makes it extremely popular for use in the field where a heavy arm is burdensome. Any choke. 5 shot capacity—a plug is furnished to conform to the 3 shot Federal Migratory Bird Law. Stock 14", Drop 1½" at comb and 2¾" at heel. Full pistol grip with grip-cap. Hand checkered stock and fore-end. Waterfowl scene on one side of receiver shows three ducks in natural setting. The other side has an equally pleasing hunting scene featuring a bird dog with two rising ringneck pheasants. Price of standard gun.

No. BI37 \$42.95



ITHACA MODEL 37 REPEATING SKEET GUN

ITHACA SKEET GRADE REPEATER— MODEL 37S

12 and 16 gauge only. 12 gauge 26 and 28". 16 gauge 26 and 28". Weight about 7 lbs. in the 12 gauge and about 6¾ lbs. in the 16 gauge. Skeet choke standard, but any choke available. Stock 14". Drop 1½" at comb, and 2½" at heel. Ventilated rib, same type as on Ithaca one barrel trap guns; no dips, no sway, AND NO RAMP (an exclusive Ithaca feature); absolutely unobstructed sighting plane. Lyman ivory sights, front and rear. Large, skeet type fore-end. Stock and forend amply hand checkered. Full pistol grip with gripcap. Attractive game scenes on sides of receiver. 5 shot capacity—plug furnished to conform to 3 shot Federal Migratory Bird Law. The RAMPLESS ventilated rib, natural "feel," and effortless handling make this gun a real "pointer." That means more "dead" targets and more successful field shots. This makes an excellent upland game gun as well as skeet gun.

No. BI37S Price \$65.00

LEFEVER SINGLE BARREL TRAP— MODEL 3



This is a new Lefever single barrel hammerless trap gun with ejector, elevated ventilated rib, soft recoil pad, ivory front and rear sights, a trap gun fore-end, which keeps the hand off the barrel, and the thick fat cone experienced trap shooters demand. The specifications are 12 gauge, 32", with a black walnut stock having the most popular stock specifications which are approximately 14½ in. long with 1½ in. drop at comb and 1⅞ in. at heel. Full checkered pistol grip and fore-end. This gun is made to standard specifications and can be supplied only as described above.

No. B13 Weight, 8 lbs.

Price \$37.80

LEFEVER A GRADE— MODEL 5



A Grade Lefever is built in .410 cal. 20, 16 and 12 gauge. Barrel lengths and weights the same as furnished on Model 1, Nitro Special. Your choice of choke either cylinder, improved cylinder, modified, full choke or our special skeet boring. Standard stock specifications, 14" measuring from the Front trigger position, drop about 2⅝", but other reasonable stock specifications furnished to special order without extra charge. A gun most any sportsman, who loves a fine gun, can afford to own: That's the Model 5 Grade A Lefever.

No. B15 Price \$37.35

LEFEVER SPECIAL SKEET GUN— MODEL 6



As shown above has an automatic ejector, beaver tail forearm, non-selective single trigger and ivory sights. It is ideal for upland shooting as well as for Skeet. Model 6—Special Skeet Guns are generally carried in stock in .410 cal. 20, 16 and 12 gauge, with 26" barrels, 14" stocks with about 2½" drop. Any other specifications within reason are built to order without extra cost. Regular Skeet boring for the first barrel uniformly covers a 30" circle at 20 yards, the second barrel covers a 30" circle at about 27 yards. Any other combination of boring to special order. It costs about half as much as other good guns with the same extras and carries the Lefever reputation of over 75 years.

No. B16 Price \$64.65

WINCHESTER .22 CALIBER RIFLES



**MODEL 69
RIFLE WITH
TELESCOPE**

Bolt action repeating rifle, take down, 5 shot clip magazine. Has 25" round tapered barrel, takes .22 short, long, and long rifle cartridges. Fitted with Winchester 5 power telescope. Winchester 97A front sight fitted with ramp and sight cover and Winchester 96B peep rear sight. Sporting type walnut stock, pistol grip style, and semi-beavertail fore-arm.

No. BV69 With peep sights and telescope.

Price each \$18.80



**MODEL 69A
REPEATING
RIFLE**

Bolt action, box magazine, take down; .22 short, long and long rifle. Round 25" tapered barrel, sporting type walnut pistol grip stock, semi-beavertail fore-arm. Winchester 97A front sight with ramp and sight cover; Winchester 96B peep rear sight.

No. BV69A Price each \$11.95



**MODEL 72
REPEATING
RIFLE**

Bolt action .22 caliber repeating rifle with tubular magazine. Has 25" round tapered barrel, crowned at muzzle. Stock is one-piece, sporting design with pistol grip and semi-beavertail fore-arm. All models have metal bead front sight, available with either open or peep rear sight, or 5 power telescope. Speed lock action, fast with short throw, and side lever safety. Magazine takes twenty .22 shorts, sixteen .22 longs, or fifteen .22 long rifle cartridges. Length overall, 42 in. Weight, 5¾ lbs.

No. BV72 With open rear sight.

Price each \$13.95

MODEL 62 REPEATING RIFLE



.22 caliber, take down. Has the same reliable action as the models 1890 and 1906 of which 1,500,000 have been furnished to satisfied shooters all over the world. 23" round tapered barrel, Lyman gold bead front sight and Winchester sporting rear sight. Straight grip, black walnut shotgun butt stock with checkered steel plate. New design fore-arm, well shaped to fit the hand. Magazine handles, interchangeable, 20 short, 16 long or 14 long rifle rim fire .22 cartridges. Specially adapted to the new Super X or Hi-speed ammunition. Weight, 5½ lbs.

No. BV62 Price each \$17.85

MODEL 68 BOLT ACTION RIFLE



This bolt action single shot rifle is take down style and shoots .22 short, long or long rifle cartridges. The 27" round barrel has a crowned muzzle. The one-piece pistol grip stock has finger grooves and a composition butt plate. Has Winchester bead front sight with ramp sight base equipped with detachable sight cover, rear peep sight with elevation and windage adjustment. Weight, about 5 lbs.

No. BV68 Price each \$6.40

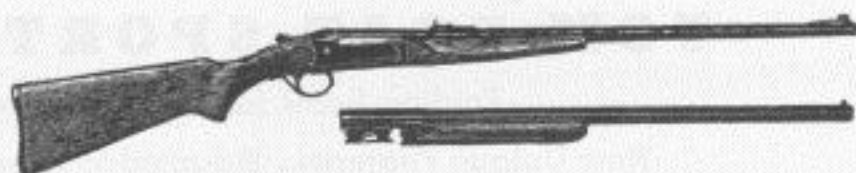
MODEL 67 BOLT ACTION RIFLE



Bolt action single shot take down rifle, shoots .22 short and .22 long and long rifle cartridges. 27" round tapered barrel; one-piece pistol grip stock; composition shotgun butt plate; Winchester metal bead front sight and new Winchester sporting rear sight with elevator. Weight, 5 lbs.

No. BV67 Price each \$5.65

COMBINATION SHOTGUN AND RIFLE



This Savage Utility Combination Gun has the No. 220 hammerless single shot gun barrel, interchangeable with the No. 219 single shot rifle barrel. Take-down model with blued steel barrels, automatic ejectors, and full pistol grip stock and fore-arm of American walnut. Hard rubber butt plate. Shot gun barrels in 12, 16, 20 and .410 gauge, in lengths as follows: 12, 16 and 20 gauge—28, 30 or 32 in.; .410 gauge—26 or 28 in. Rifle barrels are all 28 in. in .30-30 or .25-20 caliber, each with extra fore-arm. Average weight, 6 lbs.

No. BV382 12 ga. 30 in. Shot Gun and .30-30 Rifle.

Price each **\$17.25**

OIL



4 ounces of Ithaca Gun Oil, one-third more than usual, an oil which has kept guns free from rust since 1925 when they were last oiled and stored away as a real oil test.

Price **30c**

PAD



ITHACA GUN CO. RECOIL PAD

National Sportsman magazine said of the Ithaca recoil pad, "built like a bridge, plenty of reinforcement where needed, perfectly designed—absolutely shockless."

Successfully launched in 1932, widely advertised. Not one pad "kick" yet.

Price **\$2.25**

TOM BOAT SPORT CRAFT

Folding Boats for Sport Everywhere

New Unique Features. Adapted to Every Sport Need.



Motor Boat

BOATS for wandering sports people must be adapted to transportation by auto as conventional craft do not transport easily, and modern auto travel demands boats that may be stowed and utilized like hand bags. Excessive weight in ordinary craft necessitates more power to propel or row and one of the greatest objections to conventional craft is their tendency to dry out and leak after a period of transportation in the sun.

Tom Boats besides being permanently leakproof are staunchly and sturdily built for a long time of usage. There is nothing to loosen, break, or deteriorate and each and every boat is built by master craftsmen.

Hunting, fishing, camping on home waters or cruising distant waterways are readily yours with Tom Boats . . . dependable, safe, and a pleasurable satisfaction increasing with use. There is no more necessity of depending upon water logged, heavy and unresponsive rented or borrowed boats.

With Tom Boat's light weight and responsive action every outing is a happy memory and not a source of sore muscles and aching backs.

Rowing is decidedly easy and outboard motors propel the hulls faster and farther and more easily, due to light weight and simple design.

Sportsmen who use portable boats as an accessory to their respective sports will find a great amount of interest in a newly patented, portable boat that includes many unique features and especially adapted to the nomadic sportsman. This craft is of the three-section type, each section nesting within the other and the whole occupying a space only 18x34x42" allowing it to be easily carried inside of trunk of auto, back seat, house trailer, or lashed to deck of cruiser. A notable feature of this hull is the patented locking features securing the sections together; these locks allow the entire boat to be rigidly assembled in one minute.

One of the most exceptional features of this boat is the removable flotation tanks stowable inside the nested hull and when attached increase the stability by increasing length. An ingenious waterproofing process renders the hull watertight without attention for a lifetime of service and hull is impervious to water absorption. Hull utilizes oars or outboard motors up to 4½ h.p.

The great strength combined with the light weight of Tom Boats is destined to make these portable boats a favorite with sportsmen who use their boats as pleasurable accessories.

Height 14 in., length 10 ft. Weight 98-110 lbs. Comfortable seating capacity two persons. Price for boat alone: **\$85.00.**

"P. W." or plywood model is constructed of three-ply waterproof plywood over a hardwood frame. All hardware is cadmium plated. Outside covered with No. 10 canvas which is cemented to hull for utmost durability, and filled with elastic filler, finished with waterproof enamel. Inside is finished with waterproof varnish. The standard colors for the outside are cream with a green bottom. Bottom is



Divided Boat

The sectional Tom Boat is manufactured in types—model "C. B." and "P. W.", both of identical design but differing in materials used and finish. Quality materials are of the finest on each model.

The "C. B." or composition board model consists of hard, composition board over hardwood struts and frame, copper riveted and brass screws, with removable hardwood floors for easy cleaning. All outside corners bound in brass while bottom is protected by longitudinal oak strips to prevent premature wear. Entire hull finished with special waterproof finish, then varnished for a beautifully finished boat.

protected against wear with longitudinal strips. Same dimensions as "C. B." model except weight is 85-95 lbs. Price for boat alone: **\$58.50.**

Accessories for Tom Boat Sectional Boats

Flotation tanks (copper)	\$15.00 pair
Flotation tanks (galvanized)	8.00 pair
Folding Oars	6.00 pair
Folding Anchor	3.95 each
Canvas Cover	6.00 each

Price f. o. b. Knox, Indiana

Flotation tanks for these sectional boats introduce a new patented feature found on no other boat. Folding within the nested hull these tanks re-